

FIXING INSTRUCTIONS

KINGFISHER ACOUSTIC LOUVRE

1. Pre-installation requirements

The specified acoustic louvre modules are designed to be installed into a pre-prepared space.

Any necessary secondary support structures required to hold the Kingfisher acoustic modules must be provided by external parties.

2. Installation of modules

Surface preparation: The module must be installed on a flat surface. Ensure that the underside of the module is fully supported and all contact points are securely positioned against the structure.

Fixing points: Each module must be fixed to the structural support system at all four corners. All required fixings must be provided by external parties.

3. Stacking modules (For heights exceeding 1200mm)

Stacking arrangement:

In cases where the installation height exceeds 1200mm, acoustic modules should be stacked.

Shorter modules are to be placed on top of larger ones. Under no circumstances should a larger module be positioned above a smaller one without a structural support system for each module.

Fixing for stacked modules:

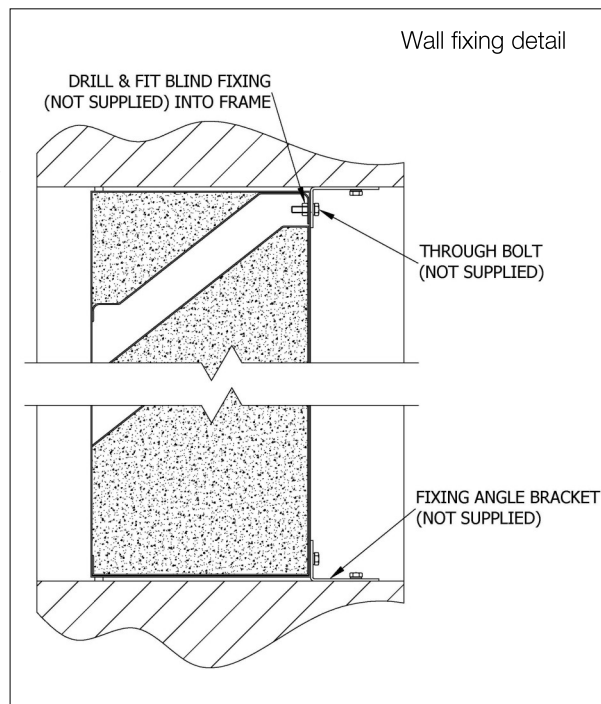
For modules placed above the base unit, the fixing method remains the same, with attachment points at all four corners. Additionally, the module must be fully supported from the underside.

Stacked modules can rest directly on top of the module below, as the lower module is designed to support the weight from its underside. This configuration is only suitable if the above modules are shorter than the ones below.

All intermediate joints in stacked modules should be fixed so as to either be interconnected to one another or independently fixed to secondary supporting members.

4. Important considerations

At no point should a Kingfisher acoustic module be cantilevered or partially supported from underneath. Every module must have complete and stable support across its entire underside to ensure safety and performance.



By following these guidelines, you ensure the safe and efficient installation of the Kingfisher acoustic louvre modules. If you have any questions or require further assistance, please contact our support team.

FOR FURTHER INFORMATION ON ALL KINGFISHER PRODUCTS PLEASE CONTACT:

.....