

FIXING INSTRUCTIONS

KINGFISHER BLADE REMOVAL

- A blade removal tool will be provided by Kingfisher if requested as shown in Fig. 1.



Fig.1 Blade removal tool

- Ensure there is access to both the front and rear of the louvre.
- Using the lowest blade as a starting point, slot the removal tool onto the closest part of the clip (Fig.3) under the blade and press downwards.
- Work along the length of the blade, unclipping it away from the mullion at each clip. Depending on the length of the blade it may require another person to support the far end, so it does not get damaged.
- Once the bottom blade has been removed successfully, work your way up the mullion, removing the remaining blades.
- Once the blades have been removed, unscrew the fixing cleats from the supporting structure to remove the mullions.



Fig. 2 Tool in situ under a clipped blade

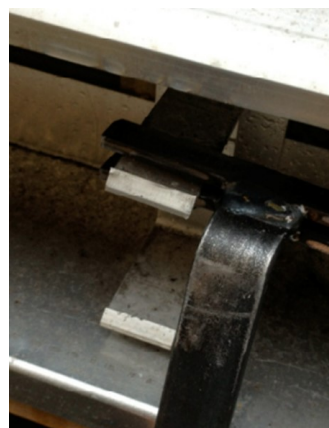


Fig. 3 Tool attached to empty clip

FOR FURTHER INFORMATION ON ALL KINGFISHER PRODUCTS PLEASE CONTACT:

.....

KINGFISHER LOUVRE SYSTEMS

Brookhill Industrial Estate, Plymouth Avenue, Pinxton, Nottingham, NG16 6NS
Telephone: (+44) 01773 814102 Web: www.kingfisherlouvres.com
Email: admin@kingfisherlouvres.com